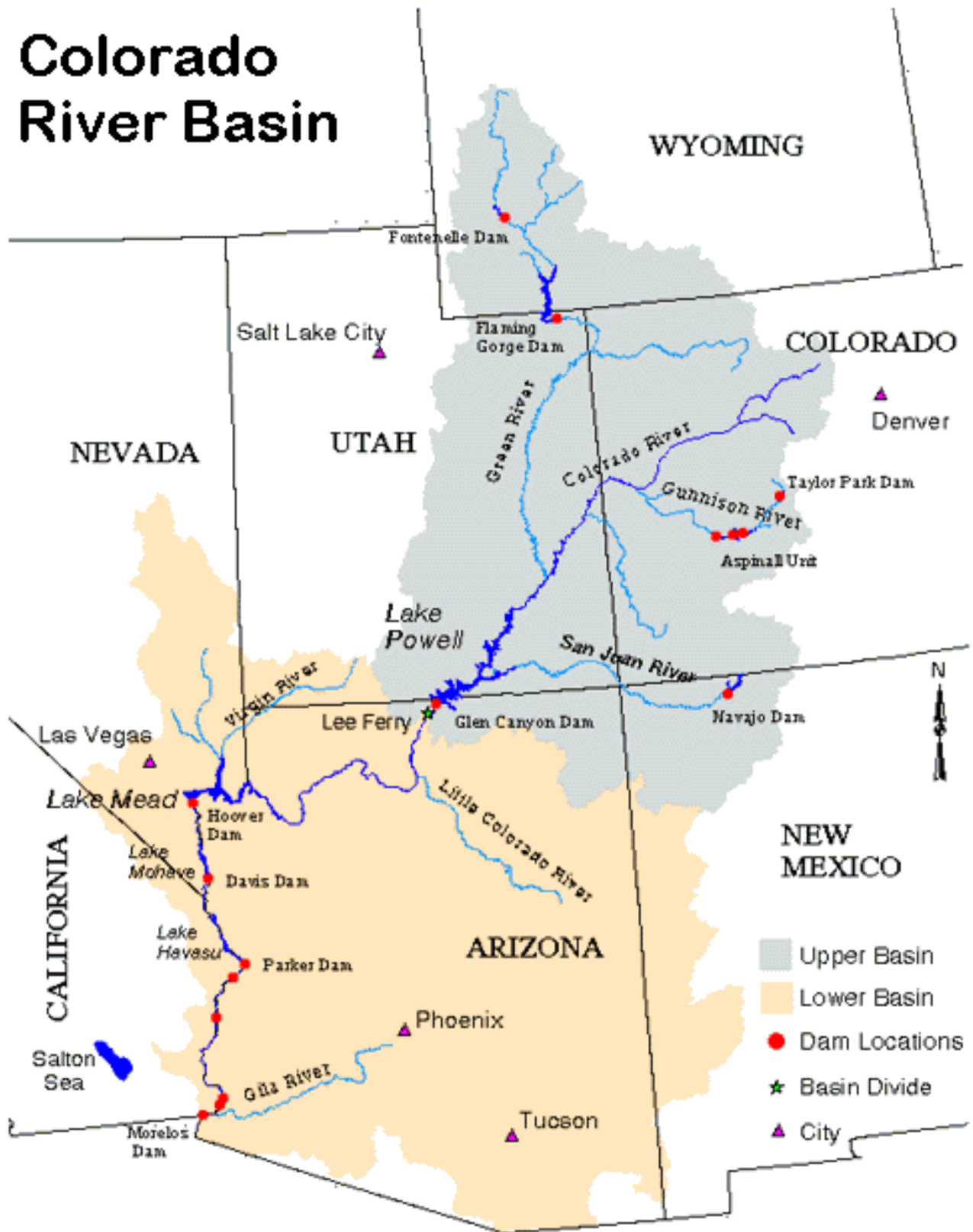
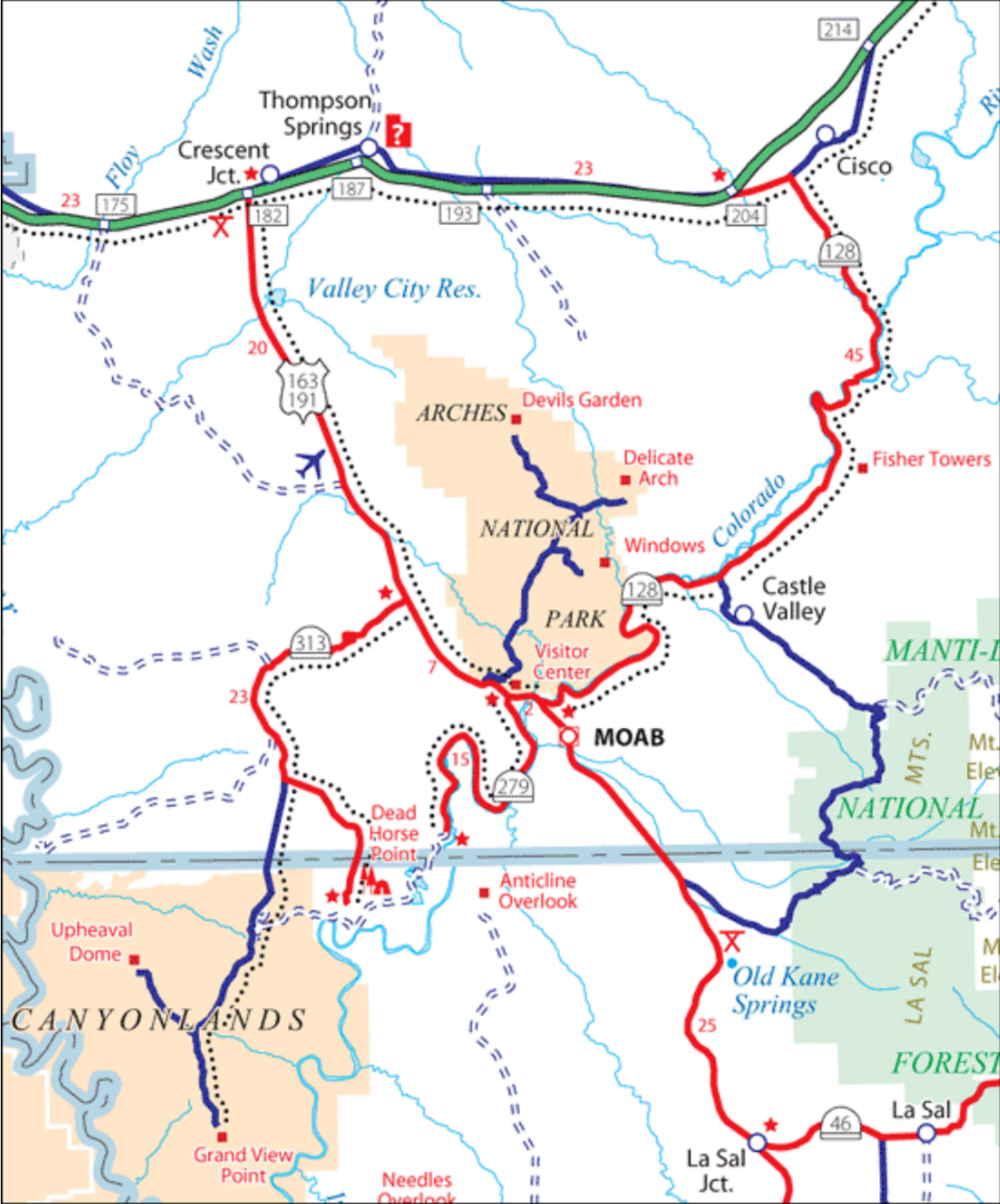


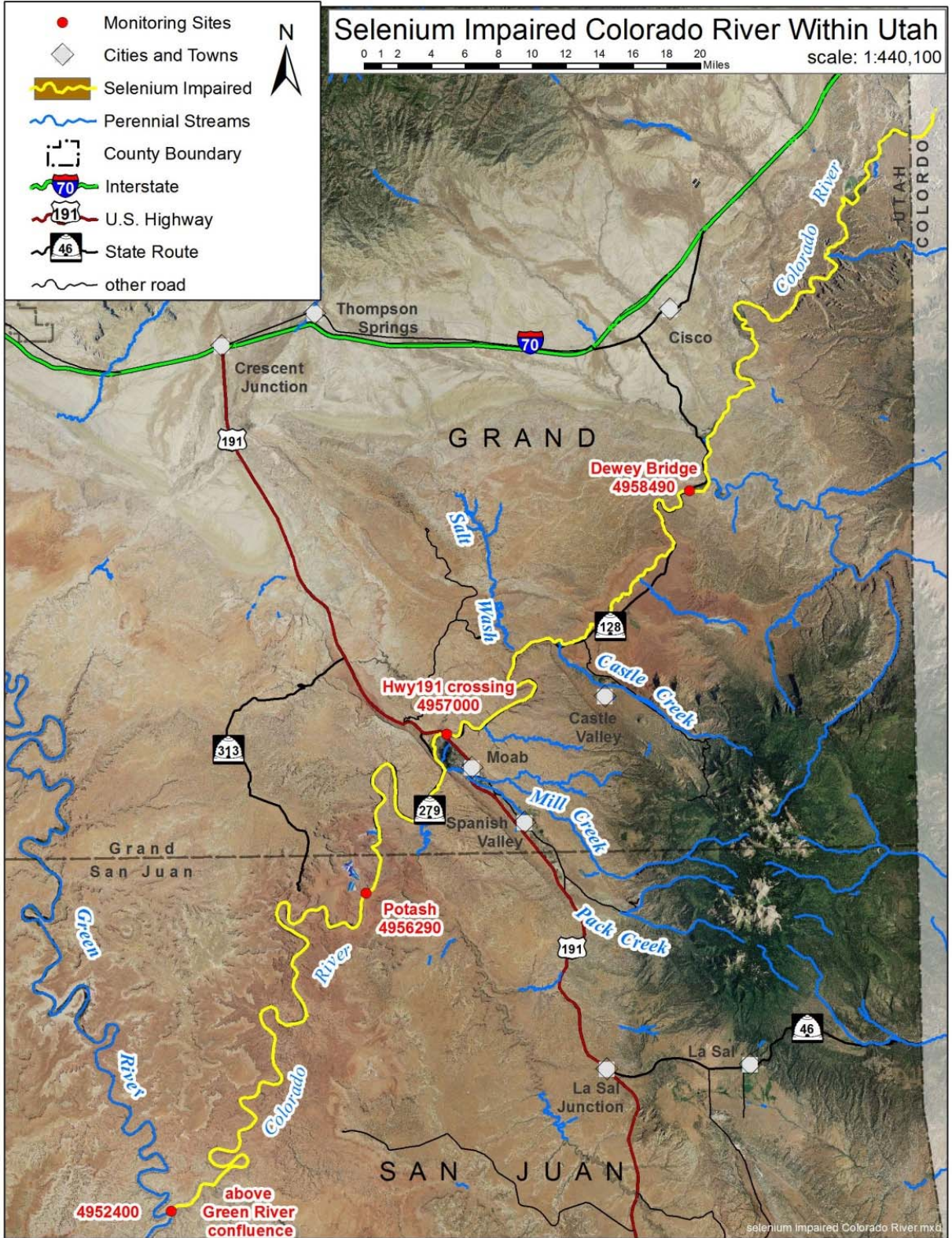
Appendix B

Maps

Colorado River Basin







Southeast Utah Geology

- ★ Cities and Towns
 - - - County Boundary
 - ~ Perennial_NHD Streams
- Geologic Formations**
- <all other values>
- J1: Entrada, Carmel, Arapien
 - J2: Morrison
 - Jg: Navajo, Kayenta, Wingate
 - K1: Dakota, Cedar Mtn., Kelvin
 - K2: Indianola, Mancos, Frontier
 - K3: Mesaverda, Price Riv., Kaiparowits
 - P: Morgan, Round Valley, Honaker Trail
 - P1: Cedar Mesa, Diamond Cr., Arcturus
 - P2: Kiabab, Toroweap, Park City
 - Pcm: metamorphic rocks
 - PP: Oquirrh Group, Wells, Weber, Calville
 - Qa: surficial alluvium and colluvium
 - Qao: surficial older alluvium/colluvium
 - Qe: surficial eolian deposits
 - Qg: surficial glacial deposits
 - Qls: surficial landslide deposits
 - T1: Wasatch, Flagstaff, Claron, White Stag
 - T2: Green River, Fowkes
 - T3: Dushesne River, Uinta, Bridger
 - T5: Castle Valley, Sevier R., Browns Park
 - Ti: intrusive rocks- Tertiary
 - Tr1: Moekopi, Dinwoody, Woodside
 - Tr2: Chinle, Ankaeh

